

TECHNICAL MANUAL

**ORGANIZATIONAL MAINTENANCE REPAIR
PARTS AND SPECIAL TOOLS LIST
FOR

SPECTRUM ANALYZERS TS-723/U,
TS-723A/U, TS-723B/U, TS-723C/U, AND
TS-723D/U**

(NSN 6625-00-668-9418)

TECHNICAL MANUAL }
 No. 11-6625-255-20P }

HEADQUARTERS
 DEPARTMENT OF THE ARMY
 WASHINGTON, DC 14 May 1976

**Organizational Maintenance Repair
 Parts and Special Tools List**

for

**SPECTRUM ANALYZERS TS-723/U, TS-723A/U,
 TS-723B/U, TS-723C/U, AND TS-723D/U
 (NSN 6625-00-668-9418)**

Current as of 15 January 1976

REPORTING OF ERRORS

You can improve this manual by recommending improvements using DA Form 2028-2 (Test) located in the back of the manual. Simply tear out the self addressed form, fill it out as shown on the sample, fold it where shown, and drop it in the mail.

If there are no blank DA Form 2028-2 (Test) in the back of your manual, use the standard DA Form 2028 (Recommended Changes to Publications and Blank Forms) and forward to the Commander, US Army Electronics Command, ATTN: AMSEL-MA-Q, Fort Monmouth, New Jersey 07703.

In either case a reply will be furnished direct to you.

Table of Contents

	Page	Illus Figure
SECTION I. Introduction	1	
II. Repair parts list	5	
Group 00 Spectrum Analyzers		
TS-723/U, TS-723A/U, TS-723B/U, TS-723C/U, and TS-723D/U		
TS-723/U and TS-723A/U, front panel	5	1
TS-723B/U, TS-723C/U, and TS-723D/U, front panel	6	2
TS-723/U, and TS-723A/U, chassis, front view	7	3
TS-723B/U, TS-723C/U, and TS-723D/U, chassis top view	9	4
Tuning gang assembly	11	5
SECTION III. Special tools list (not applicable)		
IV. National stock number and part number index	14	

SECTION I

INTRODUCTION

1. Scope

This manual lists repair parts required for performance of organizational maintenance of the TS-723/U, TS-723A/U, TS-723B/U, TS-723C/U, and TS-723D/U.

2. General

This Repair Parts and Special Tools List is divided into the following sections:

a. Section II-Repair Parts List. A list of repair parts authorized for use in the performance of maintenance. The list also includes parts which must be removed for replacement of the authorized parts. Parts lists are composed of functional groups in ascending numerical sequence, with the parts in each group listed in figure and item number sequence.

b. Section III-Special Tools List. Not applicable.

c. Section IV-National Stock Number and Part Number Index. A list, in ascending numerical sequence, of all National stock numbers appearing in the listings, followed by a list, in alphanumeric sequence, of all part numbers appearing in the listings. National stock numbers and part numbers are cross-referenced to each illustration figure and item number appearance.

3. Explanation of Columns

The following provides an explanation of columns found in the tabular listings:

a. Illustration. This column is divided as follows:

(1) *Figure number.* Indicates the figure number of illustration in which the item is shown.

(2) *Item number.* The number used to identify each item called out in the illustration.

b. Source, Maintenance, and Recoverability Codes (SMR).

(1) *Source code.* Source codes are assigned to support items to indicate the manner of acquiring support items for maintenance, repair, or overhaul of end items. Source code is entered in the first and second positions of the Uniform SMR Code format as follows:

Code

Definition

PA-item procured and stocked for anticipated or known usage.

(2) *Maintenance code.* Maintenance codes are assigned to indicate the levels of maintenance authorized to USE and REPAIR support items. The maintenance codes are entered in the third and fourth positions of the Uniform SMR Code format as follows:

(a) The maintenance code entered in the third position will indicate the lowest maintenance level authorized to remove, replace, and use the support item. The maintenance code entered in the third position will indicate the following level of maintenance:

Code

Application/explanation

O-Support item is removed, replaced, used at the organizational level.

(b) The maintenance code entered in the fourth position indicates whether the item is to be repaired and identifies the lowest maintenance level with the capability to perform complete repair (i.e., all authorized maintenance functions). This position will contain the following maintenance code:

Code

Application/explanation

Z-Nonreparable. No repair is authorized.

(3) *Recoverability code.* Recoverability codes are assigned to support items to indicate the disposition action on unserviceable items. The recoverability code is entered in the fifth position of the Uniform SMR Code format as follows:

Recoverability code

Definition

Z-Nonreparable item. When unserviceable, condemn and dispose at the level indicated in position 3.

c. National Stock Number. Indicates the National stock number assigned to the item and will be used for requisitioning purposes.

d. Part Number. Indicates the primary number used by the manufacturer (individual, company, firm, corporation, or Government activity), which controls the design and characteristics of the item by means of its engineering

drawings, specifications standards, and inspection requirements, to identify an item or range of items.

NOTE

When a stock-numbered item is requisitioned, the repair part received may have a different part number than the part being replaced.

e. Federal Supply Code for Manufacturer (FSCM). The FSCM is a 5-digit numeric code listed in SB 708-42 which is used to identify the manufacturer, distributor, or Government agency, etc.

f. Description. Indicates the Federal item name and, if required, a minimum description to identify the item.

g. Unit of Measure (U/M). Indicates the standard of the basic quantity of the listed item as used in performing the actual maintenance function. This measure is expressed by a two-character alphabetical abbreviation (e.g., ea, in, pr, etc.). When the unit of measure differs from the unit of issue, the lowest unit of issue that will satisfy the required units of measure will be requisitioned.

h. Quantity Incorporated in Unit. Indicates the quantity of the item used in the breakout shown on the illustration figure, which is prepared for a functional group, subfunctional group, or an assembly.

4. Special Information

Usable on codes are shown in the description column. Uncoded items are applicable to all models. Identification of the usable on codes used in this publication are:

<i>Code</i>	<i>Used On</i>
CZV	TS-723/U
CZW	TS-723A/U
CZX	TS-723B/U
CZY	TS-723C/U
CMD	TS-723D/U

5. How to Locate Repair Parts

a. When National stock number or part number is unknown:

(1) *First.* Using the table of contents, determine the functional group or functional subgroup within which the repair part belongs. This is necessary since illustrations are prepared for functional groups or functional subgroups, and listings are divided into the same groups.

(2) *Second.* Find the illustration covering the functional group or functional subgroup to which the repair part belongs.

(3) *Third.* Identify the repair part on the illustration and note the illustration figure and item number of the repair part.

(4) *Fourth.* Using the Repair Parts Listing, find the figure and item number noted on the illustration.

b. When National stock number or part number is known:

(1) *First.* Using the Index of National Stock Numbers and Part Numbers, find the pertinent National stock number or part number. This index is in ascending NSN sequence, followed by a list of part numbers in ascending alphanumeric sequence, cross-referenced to the illustration figure number and item number.

(2) *Second.* After finding the figure and item number, locate the figure and item number in the repair parts list.

6. Abbreviations

(Not applicable)

SECTION II. REPAIR PARTS LIST

(1) ILLUSTRATION		(2) SMR CODE	(3) NATIONAL STOCK NUMBER	(4) PART NUMBER	(5) FSCM	(6) DESCRIPTION	USABLE ON CODE	(7) UNIT OF MEAS	(8) QTY INC IN UNIT
(A) FIG NO.	(B) ITEM NO.								
1	1	PA02Z	5355-00-646-4704	374G	28480	GROUP: 00 SPECTRUM ANALYZER TS-723/U, TS-723A/U, TS-723B/U, TS-723C/U, AND TS-723D/U KNOB	02V, 02W	EA	2
1	2	PA02Z	5355-00-547-7996	54MS380	28480	KNOB	02V, 02W	EA	4

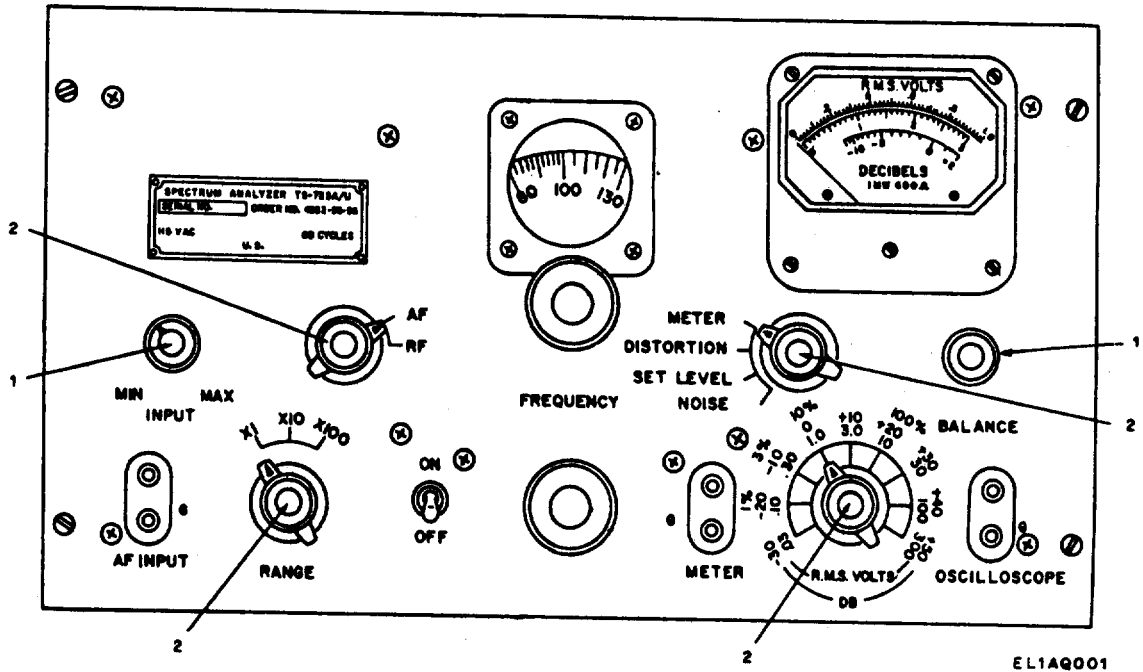


FIGURE 1. TS-723/U AND TS-723A/U, FRONT PANEL.

SECTION II. REPAIR PARTS LIST (CONTINUED)

(1) ILLUSTRATION		(2) SMR CODE	(3) NATIONAL STOCK NUMBER	(4) PART NUMBER	(5) FSCM	(6) DESCRIPTION	USABLE CN CODE	(7) UNIT OF MEAS	(8) QTY INC IN UNIT
(A) FIG NO.	(B) ITEM NO.								
2	1	PA0ZZ	5355-00-644-1264	19ME326-4	28480	KNOB	CZX,CZY,CMD	EA	2
2	2	PA0ZZ	5355-00-668-9156	S-653-3L-BB	75376	KNOB	CZX, CZY, CMD	EA	4
2	3	PA0ZZ	5935-00-843-7362	MS24663	96906	CONNECTOR, PLUG, ELECTRICAL	CZX, CZY, CMD	EA	1
2	4	FA0ZZ	6240-00-155-8706	47	24446	LAMP, INCANDESCENT	CZX, CZY, CMD	EA	1

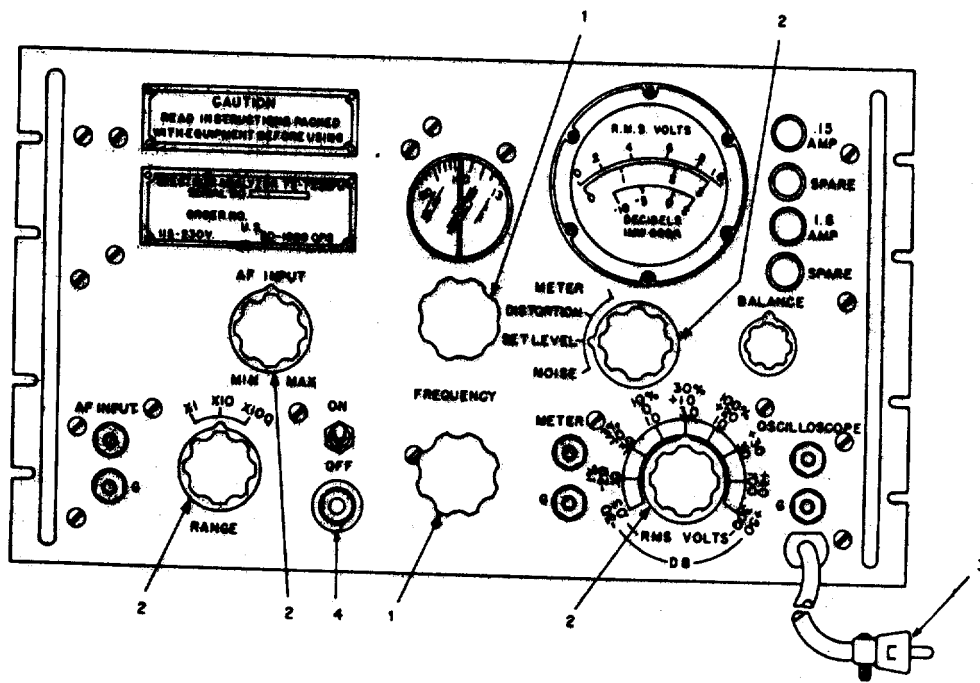


FIGURE 2. TS-723B/U, TS-723C/U, AND TS-723D/U. FRONT PANEL.

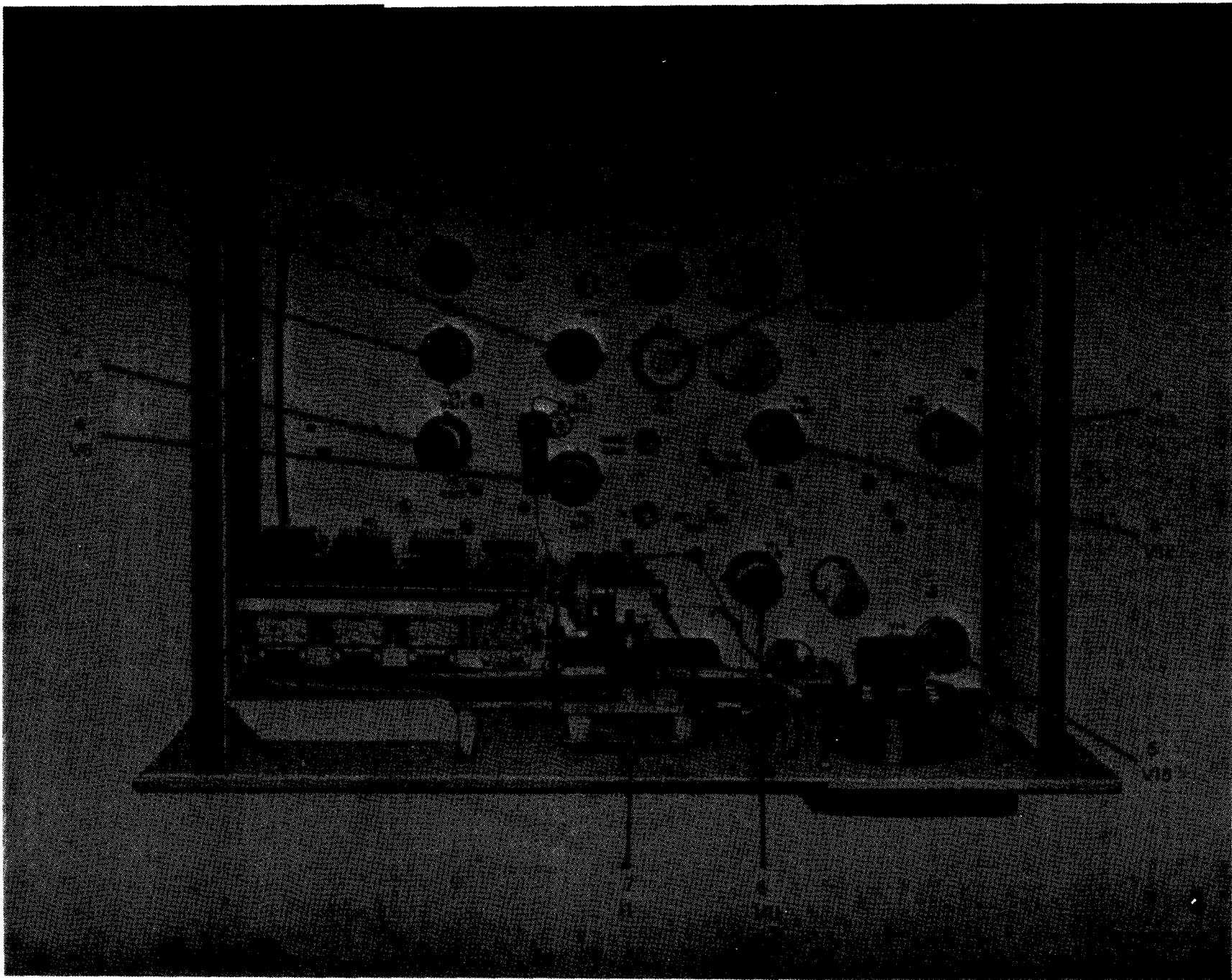


Figure 3. TS-723/U and TS-723A/U, chassis top view.

SECTION II. REPAIR PARTS LIST (CONTINUED)

(1)	(2)	(3)	(4)	(5)	(6)	(7)	(8)		
ILLUSTRATION	SMR	NATIONAL	PART	FSCM	DESCRIPTION	UNIT	QTY		
(A)	(B)	CODE	STOCK	NUMBER		OF	INC		
FIG	ITEM		NUMBER			MEAS	IN		
NO.	NO.					USABLE ON	UNIT		
						CODE			
3	1	PAOZZ	5960-00-262-0218	5Y3WGTA	81349	ELECTRON TUBE	CZV,CZW	EA	1
3	2	PAOZZ	5960-00-100-5268	6SJ7Y	81349	ELECTRON TUBE	CZV,CZW	EA	4
3	3	PAOZZ	5960-00-188-8573	OD3	81349	ELECTRON TUBE	CZV,CZW	EA	1
3	4	PAOZZ	5960-00-166-7666	6AC7	81349	ELECTRON TUBE	CZV,CZW	EA	3
3	5	PAOZZ	5960-00-188-8499	6H6	81349	ELECTRON TUBE	CZV,CZW	EA	1
3	6	PAOZZ	5960-00-228-3765	6J5WGT	81349	ELECTRON TUBE	CZV,CZW	EA	2
3	7	PAOZZ	6240-00-155-8706	47	24446	LAMP, INCANDESCENT	CZV,CZW	EA	1
3	8	PAOZZ	5960-00-617-6097	6Y6GT	81349	ELECTRON TUBE	CZV,CZW	EA	1

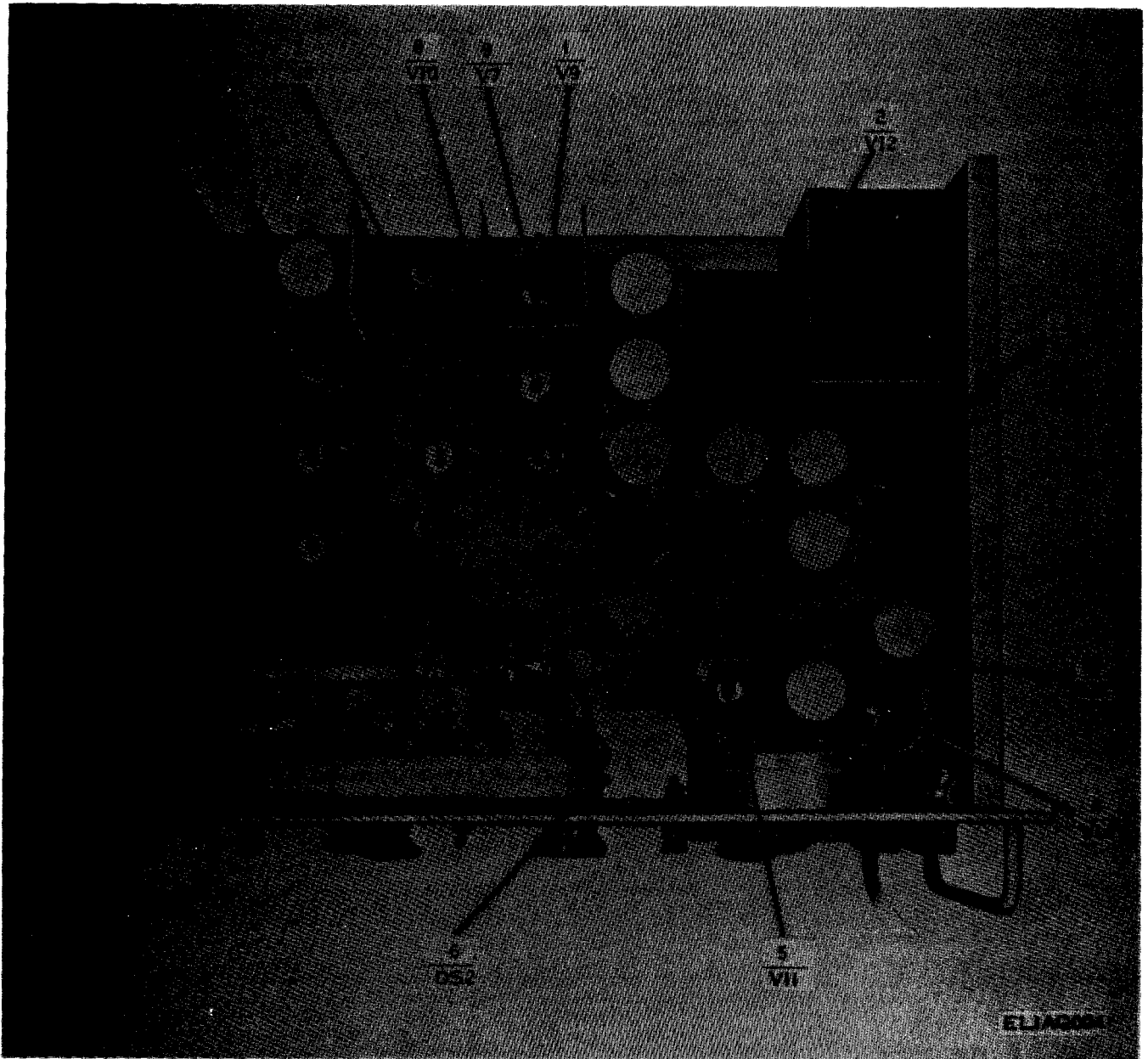
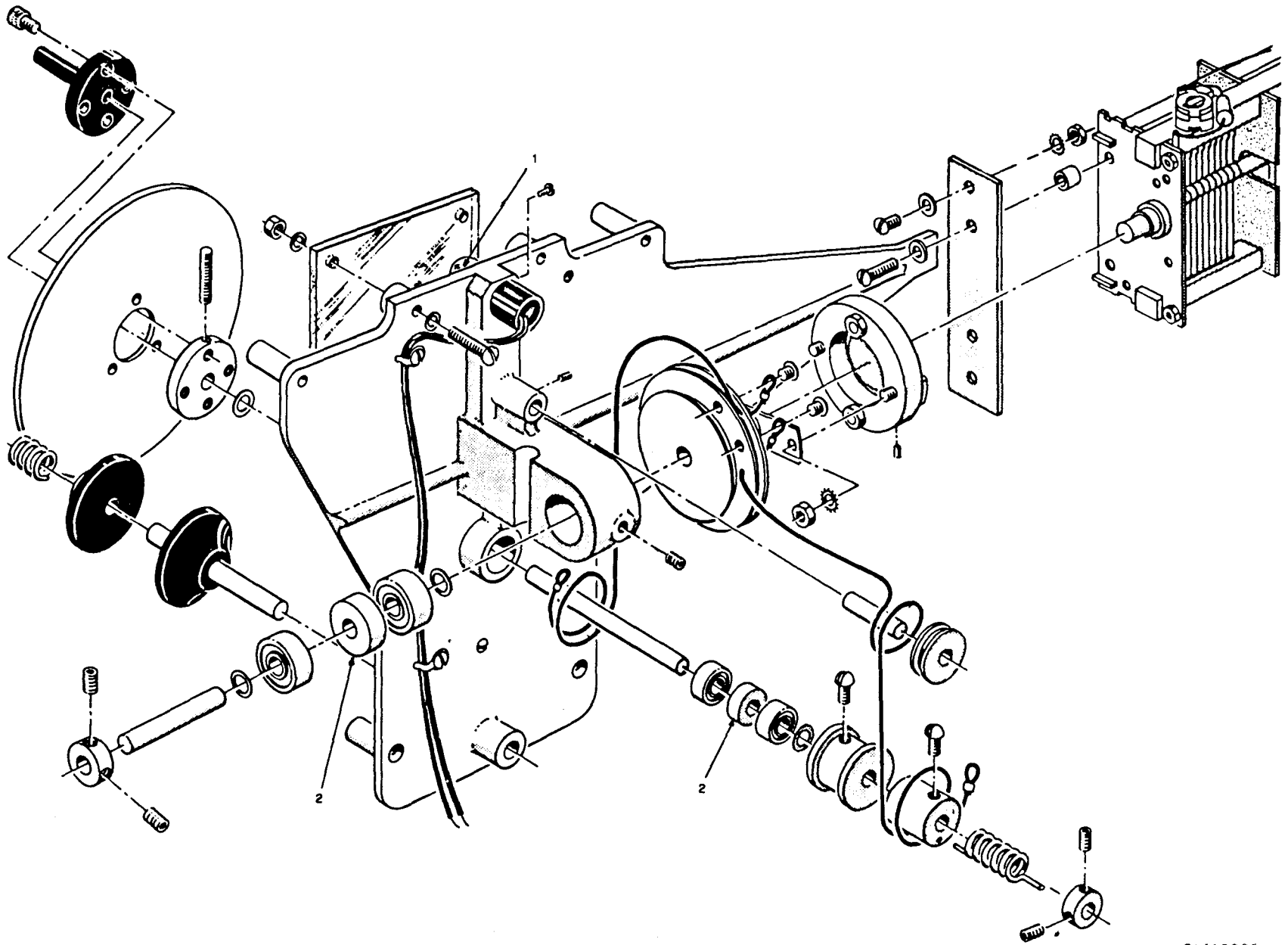


Figure 4. TS-723B/U, TS-723C/U, and TS-723D/U, chassis top view.

SECTION II. REPAIR PARTS LIST (CONTINUED)

(1)	(2)	(3)	(4)	(5)	(6)	(7)	(8)		
ILLUSTRATION	SMR	NATIONAL	PART	FSCM	DESCRIPTION	UNIT	QTY		
(A)	(B)	CODE	STOCK	NUMBER		OF	INC		
FIG	ITEM		NUMBER			MEAS	IN		
NO.	NO.				USABLE ON		UNIT		
					CODE				
4	1	PAOZZ	5960-00-188-3574	6SJ7WGT	81349	ELECTRON TUBE	CZX,CZY,CMD	EA	4
4	2	PAOZZ	5960-00-166-7666	6AC7	81349	ELECTRON TUBE	CZX,CZY,CMD	EA	3
4	3	PAOZZ	6625-00-677-0484	SMB333470	80063	SHAFT, DIAL, PLATE	CZX,CZY,CMD	EA	1
4	4	PAOZZ	5960-00-188-8499	6H6	81349	ELECTRON TUBE	CZX,CZY,CMD	EA	1
4	5	PAOZZ	5960-00-228-3765	6J5WGT	81349	ELECTRON TUBE	CZX,CZY,CMD	EA	2
4	6	PAOZZ	6240-00-155-8706	47	24446	LAMP, INCANDESCENT	CZX,CZY,CMD	EA	1
4	7	PAOZZ	5960-00-617-6097	6Y6GT	81349	ELECTRON TUBE	CZX,CZY,CMD	EA	1
4	8	PAOZZ	5960-00-188-8573	OD3	81349	ELECTRON TUBE	CZX,CZY,CMD	EA	1
4	9	PAOZZ	5960-00-262-0218	5Y3WGTA	81349	ELECTRON TUBE	CZX,CZY,CMD	EA	1



EL1AQ005

Figure 5. Tuning gang assembly.

SECTION II. SPECIAL TOOLS LIST (CONTINUED)

(1)	(2)	(3)	(4)	(5)	(6)	(7)	(8)
ILLUSTRATION	SMR	NATIONAL	PART	FSCM	DESCRIPTION	UNIT	QTY
(A)	(B)	CODE	STOCK	NUMBER		OF	INC
FIG	ITEM		NUMBER			MEAS	IN
NO.	NO.					USABLE ON CODE	UNIT
5	1	PAOZZ	6240-00-155-8706	47	24446	LAMP, INCANDESCENT	EA 1
5	2	PAOZZ	5340-00-619-0222	5-8-6	95987	SPACER	EA 2

SECTION IV. NATIONAL STOCK NUMBER AND PART NUMBER INDEX

STOCK NUMBER	FIG. NO.	ITEM NO.	STOCK NUMBER	FIG. NO.	ITEM NO.
5340-00-619-0222	5	2			
5355-00-547-7996	1	2			
5355-00-644-1264	2	1			
5355-00-646-4704	1	1			
5355-00-668-9156	2	2			
5935-00-843-7362	2	3			
5960-00-100-5268	3	2			
5960-00-166-7666	3	4			
5960-00-166-7666	4	2			
5960-00-188-8499	3	5			
5960-00-188-8499	4	4			
5960-00-188-3574	4	1			
5960-00-188-8573	3	3			
5960-00-188-8573	4	8			
5960-00-228-3765	3	6			
5960-00-228-3765	4	5			
5960-00-262-0218	3	1			
5960-00-262-0218	4	9			
5960-00-617-6097	3	8			
5960-00-617-6097	4	7			
6240-00-155-8706	2	4			
6240-00-155-8706	3	7			
6240-00-155-8706	4	6			
6240-00-155-8706	5	1			
6625-00-677-0484	4	3			

SECTION IV. NATIONAL STOCK NUMBER AND PART NUMBER INDEX (CONTINUED)

PART NUMBER	FSCM	FIG. NO.	ITEM NO.	PART NUMBER	FSCM	FIG. NO.	ITEM NO.
G74G	28480	1	1				
MS24663	96906	2	3				
SMB333470	80063	4	3				
S-653-3L-BB	75376	2	2				
OD3	81349	3	3				
OD3	81349	4	8				
19ME326-4	28480	2	1				
47	24446	2	4				
47	24446	3	7				
47	24446	4	6				
47	24446	5	1				
5Y3WGTA	81349	3	1				
5Y3WGTA	81349	4	9				
5-8-6	95987	5	2				
54MS380	28480	1	2				
6AC7	81349	3	4				
6AC7	81349	4	2				
6H6	81349	3	5				
6H6	81349	4	4				
6J5WGT	81349	3	6				
6J5WGT	81349	4	5				
6SJ7Y	81349	3	2				
6Y6GT	81349	3	8				
6Y6GT	81349	4	7				
65J7WGT	81349	4	1				

By Order of the Secretary of the Army:

FRED C. WEYAND

*General, United States Army
Chief of Staff*

Official:

PAUL T. SMITH

*Major General, United States Army
The Adjutant General*

DISTRIBUTION:

Active Army:

USASA (2)
COE (1)
TSG (1)
USAARENBD (1)
DARCOM (1)
MICOM (2)
TECOM (2)
TRADOC (2)
ARADCOM (2)
ARADCOM Rgn (2)
OS Maj Comd (4)
LOGCOMD (3)
USACC (4)
MDW (1)
Armies (2)
corps (2)
Instl (2) except
 Ft Gillem (10)
 Ft Gordon (10)
 Ft Huachuca (10)
 Ft Carson (5)
 SAAD (30)
 LBAD (14)
 TOAD (14)
 SHAD (3)
Svc Colleges (1)
USASESS (5)

USAINTC (3)
USAAD (2)
USAFAS (2)
USAARMS (2)
USAIS (2)
USAES (2)
HISA (Ft Monmouth) (33)
Ft Richardson (ECOM Ofc) (2)
MAAG (1)
USARMIS (1)
USARDL (2)
USACRREL (2)
USAERDAA (1)
USAERDAW (1)
Sig FLDMS (1)
Units org under fol TOE:-1 ea.
7
11-16
11-95
11-96
11-97
11-98
11-117
11-500(AA-AC)
17
17-51

ARNG: State AG (3); Units-Same as Active Army except allowance is one (1) copy per unit.

USAR: None.

For explanation of abbreviations used, see AR 310-50.



SOMETHING WRONG WITH THIS MANUAL?

THEN... JOT DOWN THE DOPE ABOUT IT ON THIS FORM, TEAR IT OUT, FOLD IT AND DROP IT IN THE MAIL!

FROM: (YOUR UNIT'S COMPLETE ADDRESS)

Commander
Stateside Army Depot
ATTN: AMSTA-US
Stateside, N.J. 07703

DATE 10 July 1975

PUBLICATION NUMBER

TM 11-5840-340-12

DATE

23 Jan 74

TITLE

Radar Set AN/SPC-76

BE EXACT... PIN-POINT WHERE IT IS

IN THIS SPACE TELL WHAT IS WRONG AND WHAT SHOULD BE DONE ABOUT IT:

PAGE NO.	PARA-GRAPH	FIGURE NO.	TABLE NO.
2-25	2-28		
3-10	3-3		3-1
5-6	5-8		
		F03	

Recommend that the installation antenna alignment procedure be changed throughout to specify a 2° IFF antenna lag rather than 1°.

REASON: Experience has shown that with only a 1° lag, the antenna servo system is too sensitive to wind gusting in excess of 27 knots, and has a tendency to rapidly accelerate and decelerate as it hunts, causing strain to the drive train. Hunting is minimized by adjusting the lag to 2° without degradation of operation.

Item 5, Function column. Change "2 db" to "3db."

REASON: The adjustment procedure for the TRANS POWER FAULT indicator calls for a 3 db (500 watts) adjustment to light the TRANS POWER FAULT indicator.

Add new step f.1 to read, "Replace cover plate removed in step e.1, above."

REASON: To replace the cover plate.

Zone C 3. On J1-2, change "+24 VDC to "+5 VDC."

REASON: This is the output line of the 5 VDC power supply. + 24 VDC is the input voltage.

TEAR ALONG DOTTED LINE

TYPED NAME, GRADE OR TITLE, AND TELEPHONE NUMBER

SSG I. M. DeSpirito 999-1776

SIGN HERE:

SSG I. M. DeSpirito

DA FORM 2028-2 (TEST) 1 AUG 74

P.S.--IF YOUR OUTFIT WANTS TO KNOW ABOUT YOUR MANUAL "FIND," MAKE A CARBON COPY OF THIS AND GIVE IT TO YOUR HEADQUARTERS.

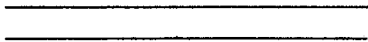
HISA 1686-75

FILL IN YOUR
UNIT'S ADDRESS



FOLD BACK

DEPARTMENT OF THE ARMY



OFFICIAL BUSINESS

Commander
US Army Electronics Command
ATTN: DRSEL-MA-Q
Fort Monmouth, New Jersey 07703

FOLD BACK

TEAR ALONG DOTTED LINE

FILL IN YOUR
UNIT'S ADDRESS

FOLD BACK

DEPARTMENT OF THE ARMY

OFFICIAL BUSINESS

Commander
US Army Electronics Command
ATTN: DRSEL-MA-Q
Fort Monmouth, New Jersey 07703

TEAR ALONG DOTTED LINE

FOLD BACK

RECOMMENDED CHANGES TO EQUIPMENT TECHNICAL MANUALS



SOMETHING WRONG WITH THIS MANUAL?

THEN... JOT DOWN THE DOPE ABOUT IT ON THIS FORM, TEAR IT OUT, FOLD IT AND DROP IT IN THE MAIL!

FROM: (YOUR UNIT'S COMPLETE ADDRESS)

DATE

PUBLICATION NUMBER

DATE

TITLE

BE EXACT. . . PIN-POINT WHERE IT IS

IN THIS SPACE TELL WHAT IS WRONG AND WHAT SHOULD BE DONE ABOUT IT:

PAGE NO.	PARA-GRAPH	FIGURE NO.	TABLE NO.

IN THIS SPACE TELL WHAT IS WRONG AND WHAT SHOULD BE DONE ABOUT IT:

TEAR ALONG DOTTED LINE

TYPED NAME, GRADE OR TITLE, AND TELEPHONE NUMBER

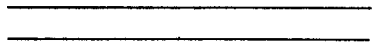
SIGN HERE:

FILL IN YOUR
UNIT'S ADDRESS



FOLD BACK

DEPARTMENT OF THE ARMY



OFFICIAL BUSINESS

Commander
US Army Electronics Command
ATTN: DRSEL-MA-Q
Fort Monmouth, New Jersey 07703

FOLD BACK

TEAR ALONG DOTTED LINE

